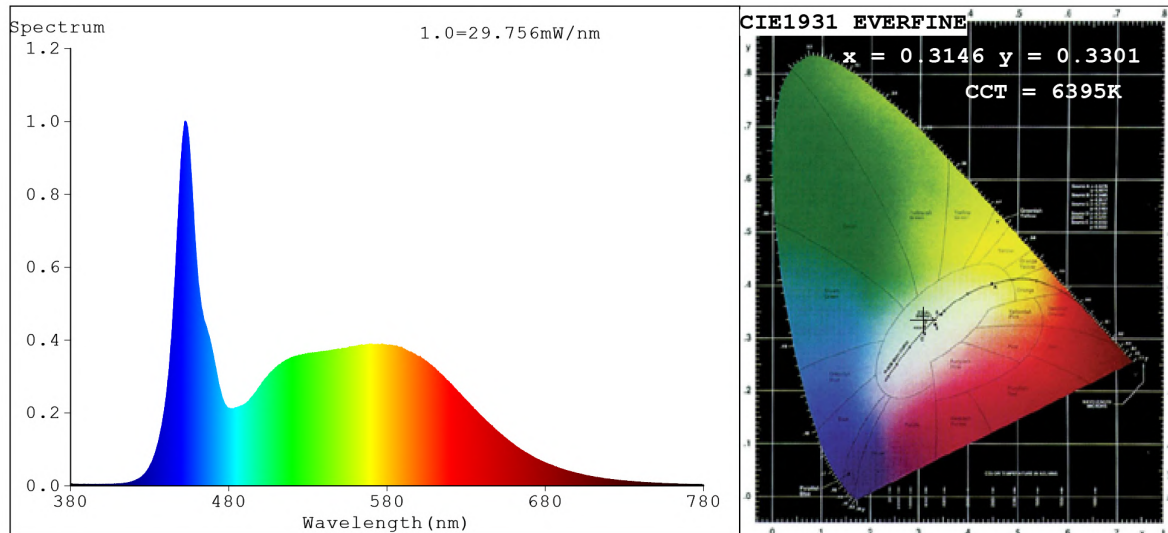


Spectrum Test Report



Color Parameters:

Chromaticity Coordinate: $x=0.3146$ $y=0.3301$ $u'=0.1987$ $v'=0.4692$
 CCT=6395K (Duv=0.0028) Dominant WL: $\lambda_d = 489.5\text{nm}$ Purity=6.6%
 Ratio: R=13.7% G=80.3% B=5.9% ; Peak WL: $\lambda_p = 452.6\text{nm}$ FWHM=17.2nm
 Render Index: Ra=84.2 CRI=77.2 TM30: Rf=81 Rg=93
 R1 =83 R2 =91 R3 =94 R4 =82 R5 =83 R6 =85 R7 =87
 R8 =69 R9 =9 R10=77 R11=82 R12=56 R13=86 R14=97 R15=78

Photo Parameters:

Flux = 753.3 lm Eff. : 143.60 lm/W Fe = 2.421 W Scotopic: 1711.4 S/P: 2.2719

Electrical parameters:

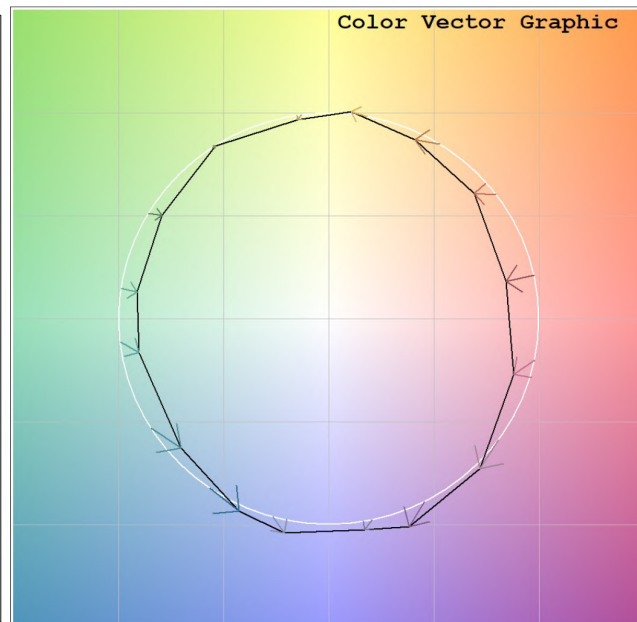
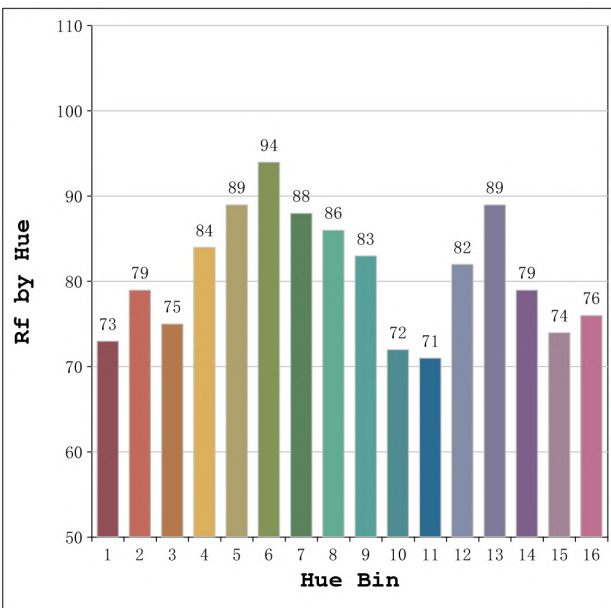
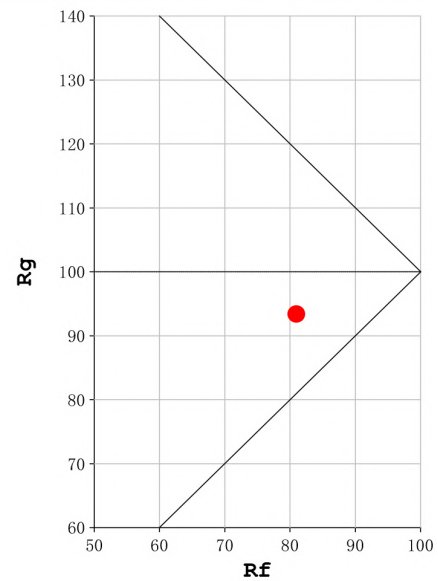
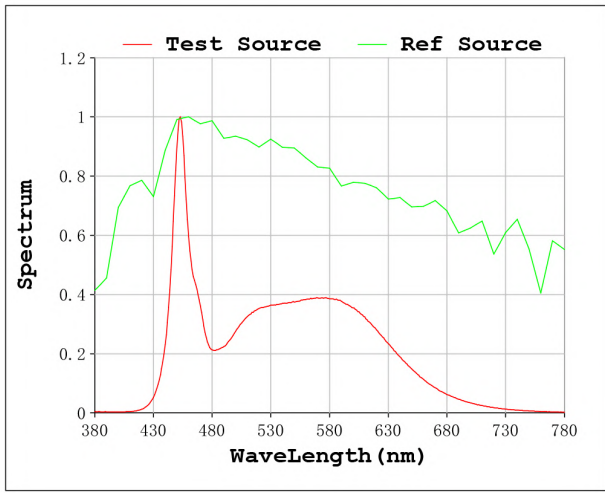
V = 23.998 V I = 0.2186 A P = 5.246 W PF = 1.000

Status: Integral T = 1238 ms Ip = 52764 (81%)

Model: Ecoled Élite 5 6500K
 Tester: Sergio Carneros
 Temperature: 25Deg
 Manufacturer: Luz Negra

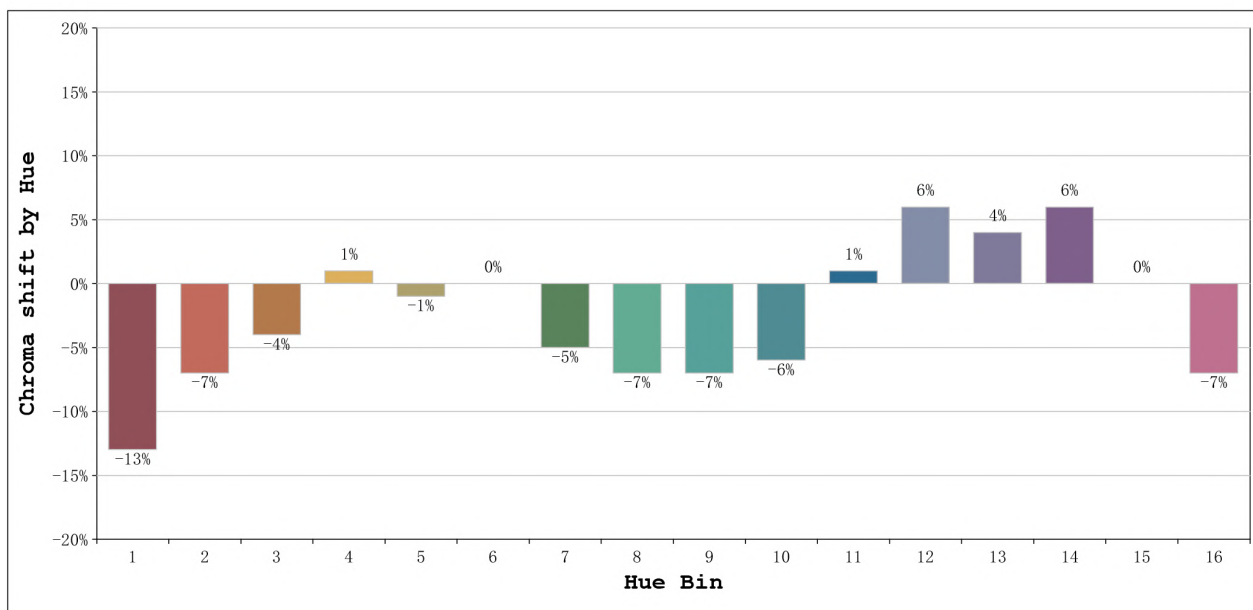
Number: 31.005
 Date: 2023-01-18 16:22:56
 Humidity: 57%
 Remarks: 100cm de tira flexible

Rf: 81 **CCT: 6395 K** **u': 0.1987**
Rg: 93 **Duv: 0.0028** **v': 0.4692**



Model:Ecoled Élite 5 6500K
 Tester:Sergio Carneros
 Temperature:25Deg
 Manufacturer:Luz Negra

Number: 31.005
 Date:2023-01-18 16:22:56
 Humidity:57%
 Remarks:100cm de tira flexible



			Graphic shift(%)	
Hue Bin	Hue Angle	Rf	Chroma	Hue
1	0.0° - 22.5°	73	-13	0
2	22.5° - 45.0°	79	-7	6
3	45.0° - 67.5°	75	-4	11
4	67.5° - 90.0°	84	1	8
5	90.0° - 112.5°	89	-1	2
6	112.5° - 135.0°	94	0	-1
7	135.0° - 157.5°	88	-5	-2
8	157.5° - 180.0°	86	-7	0
9	180.0° - 202.5°	83	-7	7
10	202.5° - 225.0°	72	-6	16
11	225.0° - 247.5°	71	1	18
12	247.5° - 270.0°	82	6	7
13	270.0° - 292.5°	89	4	-3
14	292.5° - 315.0°	79	6	-12
15	315.0° - 337.5°	74	0	-15
16	337.5° - 360.0°	76	-7	-8

Model:Ecoled Élite 5 6500K
 Tester:Sergio Carneros
 Temperature:25Deg
 Manufacturer:Luz Negra

Number: 31.005
 Date:2023-01-18 16:22:56
 Humidity:57%
 Remarks:100cm de tira flexible